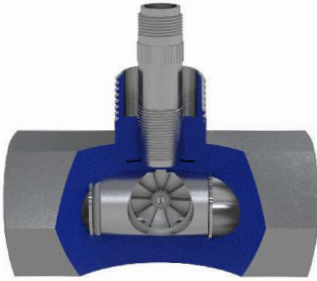


Encapsulated Low Flow Turbine Meter

**HIGHLY ACCURATE AND RELIABLE
FLOW MEASUREMENT**



Turbines, Inc. is the leader in the design and manufacture of reliable and accurate turbine flow metering equipment, electronic monitors, and accessories. All products are engineered, manufactured, and calibrated using premium quality materials by skilled tradesman with state-of-the-art equipment.

Turbines, Inc. maintains a team of dedicated engineers, technicians, and application specialists, who are on-call to assist with product/application guidance, technical assistance, and special configurations or modifications.

Specifications

SIZE	NOMINAL FLOW RANGE U.S. Gallons (Liters) Per Minute		ΔP psi (bar)
	Minimum Repeatable	Maximum Repeatable	
LFENC020	0.007 (0.026)	0.070 (0.265)	30
LFENC030	0.008 (0.030)	0.090 (0.341)	17
LFENC040	0.010 (0.038)	0.170 (0.644)	14
LFENC050	0.013 (0.049)	0.250 (0.946)	10
LFENC060	0.017 (0.064)	0.350 (1.325)	12
LFENC070	0.020 (0.076)	0.450 (1.703)	12
LFENC080	0.030 (0.114)	0.650 (2.461)	18
LFENC090	0.040 (0.151)	0.750 (2.839)	16
LFENC100	0.030 (0.114)	0.950 (3.596)	33
LFENC125	0.040 (0.151)	1.500 (5.678)	33
LFENC150	0.055 (0.208)	2.000 (7.571)	34
LFENC175	0.070 (0.265)	3.000 (11.356)	52
Pressure drop based on water at a viscosity of 1 Cpse			

Repeatability	+/- 0.25% Over Flow Range
Operating Temperature	-450°F to +450°F
Operating Pressure	Up to 20,000 PSI
Flow rate	From 0.007 to 3.00gpm
Connections	FNPT (consult factory for other options)
Materials	
Meter body/Internals	316 Stainless Steel (consult factory for other options)
Rotor	17-4 PH, Nickel 200, Duplex Stainless steel (consult factory for other options)
Bearings	440C Stainless steel ball bearings with self-lubricating retainer, hard carbon composite (consult factory for other options)
Additional Information	Full line of Retrofit Kits are available Factory refurbishment is available
Certifications	ISO 9001, NIST traceable calibration

Model Number Designation for LF Series Meter

LFENC(Meter Size) - (Meter End Fitting) - (Bearing) - (Rotor Material) - (Housing/Internal Material) -

Meter Size

020
030
040
050
060
070
080
090
100
125
150
175

Meter Endfitting

4 = 1/2" FNPT (only available 020 - 090)
5 = 1" FNPT

Bearing

B = 440C Ball Bearing, Bronze(Reinforced Teflon Retainer
C = Carbon Composite Sleeve Bearing

Rotor Material

1 = 17-4 PH
2 = Nickel 200
3 = Duplex Stainless Steel

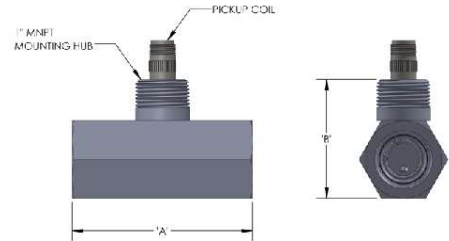
Housing/Internal Material

A = 316-SS

O-ring

6 = Teflon

Installation Guide



Size	'A'	'B'
LFENC20-90	3.750 (95.25mm)	2.780 (70.61mm)
LFENC100-175	4.750 (120.65mm)	2.780 (70.61mm)

Service

Our dedicated staff offers complete support and recertification for flow meters — whether our own or a competitor's brand. Our calibration services are performed by our trained technicians using the latest testing equipment.

Turbines, Inc. maintains extensive inventories in multiple locations to facilitate rapid, industry leading deliveries.

Worldwide Support

We serve customers globally with offices in Altus, OK; Seneca, SC; Odessa, TX; Cranston, RI; and Edmonton, Alberta, Canada.



All Turbines, Inc. products are proudly made in the U.S.A.



15935 Highway 283 N.
Altus, Oklahoma 73522, USA
Tel: +1-580-477-3067
www.turbinesincorporated.com



A wholly Owned Subsidiary of Turbines, Inc. Altus, OK, USA

112 Lumber Ln.
Seneca, SC 29672 USA
Tel: +1-864-882-4544
www.turbinesincorporated.com



960 South Meadow Ave.
Odessa, TX 79761 USA
Tel: +1-432-333-4800
www.turbinesodessa.com



800 Wellington Avenue
Cranston, RI 02910, USA
Tel: +1-401-461-6366
www.primaryflowsignal.com



2236 80th Avenue NW,
Edmonton, AB T6P 1N2
Tel: 877-661-3569
www.pfscanada.ca