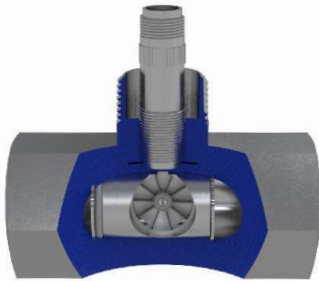


# Encapsulated Low Flow Turbine Meter

HIGHLY ACCURATE AND RELIABLE  
FLOW MEASUREMENT



**Turbines, Inc.** is the leader in the design and manufacture of reliable and accurate turbine flow metering equipment, electronic monitors, and accessories. All products are engineered, manufactured, and calibrated using premium quality materials by skilled tradesman with state-of-the-art equipment.

Turbines, Inc. maintains a team of dedicated engineers, technicians, and application specialists, who are on-call to assist with product/application guidance, technical assistance, and special configurations or modifications.

## Specifications

SIZE	NOMINAL FLOW RANGE U.S. Gallons (Liters) Per Minute		$\Delta P$ psi (bar)
	Minimum Repeatable	Maximum Repeatable	
LFENC020	0.007 (0.026)	0.070 (0.265)	30
LFENC030	0.008 (0.030)	0.090 (0.341)	17
LFENC040	0.010 (0.038)	0.170 (0.644)	14
LFENC050	0.013 (0.049)	0.250 (0.946)	10
LFENC060	0.017 (0.064)	0.350 (1.325)	12
LFENC070	0.020 (0.076)	0.450 (1.703)	12
LFENC080	0.030 (0.114)	0.650 (2.461)	18
LFENC090	0.040 (0.151)	0.750 (2.839)	16
LFENC100	0.030 (0.114)	0.950 (3.596)	33
LFENC125	0.040 (0.151)	1.500 (5.678)	33
LFENC150	0.055 (0.208)	2.000 (7.571)	34
LFENC175	0.070 (0.265)	3.000 (11.356)	52
Pressure drop based on water at a viscosity of 1 Cpse			

Repeatability	+/- 0.25% Over Flow Range
Operating Temperature	-450°F to +450°F
Operating Pressure	Up to 8,000 PSI
Flow rate	From 0.007 to 3.00gpm
Connections	FNPT (consult factory for other options)
<b>Materials</b>	
Meter body/Internals	316 Stainless Steel (consult factory for other options)
Rotor	17-4 PH, Nickel 200, Duplex Stainless steel (consult factory for other options)
Bearings	440C Stainless steel ball bearings with self-lubricating retainer, hard carbon composite (consult factory for other options)
<b>Additional Information</b>	
Full line of Retrofit Kits are available Factory refurbishment is available	
<b>Certifications</b>	
ISO 9001, NIST traceable calibration	



Model Number Designation for LF Series Meter

LFENC(Meter Size) - (Meter End Fitting) - (Bearing) - (Rotor Material) - (Housing/Internal Material) -

**Meter Size**

- 020
- 030
- 040
- 050
- 060
- 070
- 080
- 090
- 100
- 125
- 150
- 175

**Meter Endfitting**

- 4 = 1/2" FNPT (only available 020 - 090)
- 5 = 1" FNPT

**Bearing**

- B = 440C Ball Bearing, Bronze Reinforced Teflon Retainer
- C = Carbon Composite Sleeve Bearing

**Rotor Material**

- 1 = 17-4 PH
- 2 = Nickel 200
- 3 = Duplex Stainless Steel

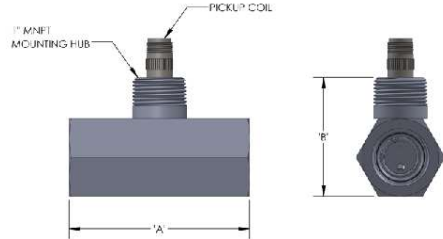
**Housing/Internal Material**

- A = 316-SS

**O-ring**

- 6 = Teflon

Installation Guide



Size	'A'	'B'
LFENC20-90	3.750 (95.25mm)	2.780 (70.61mm)
LFENC100-175	4.750 (120.65mm)	2.780 (70.61mm)

**Service**

Our dedicated staff offers complete support and recertification for flow meters — whether our own or a competitor's brand. Our calibration services are performed by our trained technicians using the latest testing equipment.

Turbines, Inc. maintains extensive inventories in multiple locations to facilitate rapid, industry leading deliveries.

**Worldwide Support**

We serve customers globally with offices in Altus, OK; Seneca, SC; Odessa, TX; Cranston, RI; and Edmonton, Alberta, Canada.

 All Turbines, Inc. products are proudly made in the U.S.A.



15935 Highway 283 N.  
Altus, Oklahoma 73522, USA  
Tel: +1-580-477-3067  
[www.turbinesincorporated.com](http://www.turbinesincorporated.com)



112 Lumber Ln.  
Seneca, SC 29672 USA  
Tel: +1-864-882-4544  
[www.turbinesincorporated.com](http://www.turbinesincorporated.com)



960 South Meadow Ave.  
Odessa, TX 79761 USA  
Tel: +1-432-333-4800  
[www.turbinesodessa.com](http://www.turbinesodessa.com)



800 Wellington Avenue  
Cranston, RI 02910, USA  
Tel: +1-401-461-6366  
[www.primaryflowsignal.com](http://www.primaryflowsignal.com)



2236 80th Avenue NW,  
Edmonton, AB T6P 1N2  
Tel: 877-661-3569  
[www.pfscanada.ca](http://www.pfscanada.ca)