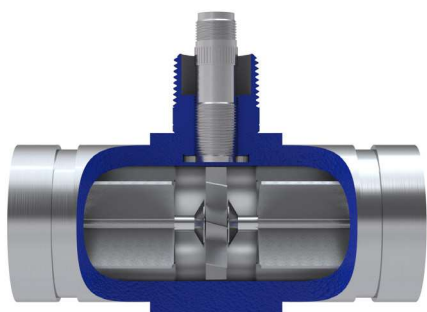
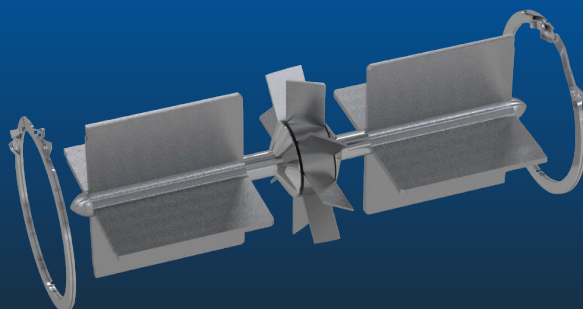


# TMG Series Gas Turbine Meter Internal Kit

**ACCURATE AND RELIABLE GAS FLOW MEASUREMENT**



**Turbines, Inc.** is the leader in the design and manufacture of reliable and accurate turbine flow metering equipment, electronic monitors, and accessories. All products are engineered, manufactured, and calibrated using premium quality materials by skilled tradesman with state-of-the-art equipment.

Turbines, Inc. maintains a team of dedicated engineers, technicians, and application specialists, who are on-call to assist with product/application guidance, technical assistance, and special configurations or modifications.

Specifications	
<b>Performance</b>	
Linearity	+/- 1.0% (density dependent)
Repeatability	+/- 0.1% over flow range
Operating Temperature	-450°F to +450°F (850°F with special coil)
Flow Rate	0.5 to 12,000 ACFM
<b>Materials</b>	
Meter Body	316 Stainless steel (consult factory for other options)
Rotor	17-4PH Stainless steel (consult factory for other options)
Bearings	440C Stainless steel ball bearings with self-lubricating retainer
<b>Certifications</b>	ISO 9001, NIST traceable calibration

## Details

The TMG Series turbine flow meter internal kit is easy to install, allowing for minimal downtime and efficient maintenance. The TMG Series kit contains all internal parts of the meter: rotor, bearings, support assemblies, and snap rings.



Retrofit Kit Model	Size	Range (ACFM)
TMGK0100L	1"	0.5 – 20
TMGK0100	1"	3 – 30
TMGK0100H	1"	4 – 60
TMGK0200L	2"	2 – 90
TMGK0200	2"	15 – 250
TMGK0300	3"	40-650
TMGK0400	4"	75-1250
TMGK0600	6"	250-2900
TMGK0800	8"	330-5000
TMGK1000	10"	650-7500
TMGK1200	12"	900-12000

## Service

Our dedicated staff offers complete support and recertification for flow meters — whether our own or a competitor's brand. Our calibration services are performed by our trained technicians using the latest testing equipment.

Turbines, Inc. maintains extensive inventories in multiple locations to facilitate rapid, industry leading deliveries.

## Worldwide Support

We serve customers globally with offices in Altus, OK; Seneca, SC; Odessa, TX; Cranston, RI; and Edmonton, Alberta, Canada.



All Turbines, Inc. products are proudly made in the U.S.A.



15935 Highway 283 N.  
Altus, Oklahoma 73522, USA  
Tel: +1-580-477-3067  
[www.turbinesincorporated.com](http://www.turbinesincorporated.com)



A wholly Owned Subsidiary of Turbines, Inc. Altus, OK, USA

112 Lumber Ln.  
Seneca, SC 29672 USA  
Tel: +1-864-882-4544  
[www.turbinesincorporated.com](http://www.turbinesincorporated.com)



960 South Meadow Ave.  
Odessa, TX 79761 USA  
Tel: +1-432-333-4800  
[www.turbinesodessa.com](http://www.turbinesodessa.com)



800 Wellington Avenue  
Cranston, RI 02910, USA  
Tel: +1-401-461-6366  
[www.primaryflowsignal.com](http://www.primaryflowsignal.com)



2236 80th Avenue NW,  
Edmonton, AB T6P 1N2  
Tel: 877-661-3569  
[www.pfscanada.ca](http://www.pfscanada.ca)