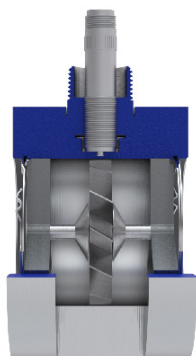


High Accuracy Wafer Meter

**HIGHLY ACCURATE AND RELIABLE
FLOW MEASUREMENT**



Turbines, Inc. is the leader in the design and manufacture of reliable and accurate turbine flow metering equipment, electronic monitors, and accessories. All products are engineered, manufactured, and calibrated using premium quality materials by skilled tradesman with state-of-the-art equipment.

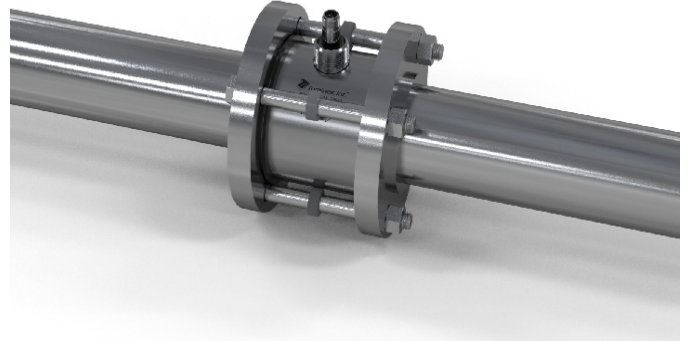
Turbines, Inc. maintains a team of dedicated engineers, technicians, and application specialists, who are on-call to assist with product/application guidance, technical assistance, and special configurations or modifications.

Specifications	
Performance	
Linearity	+/- 0.5% over standard flow range (for +/- 0.25% consult factory)
Repeatability	+/- 0.1% over standard flow range
Operating Temperature	-450°F to +450°F (850°F with special coil)
Operating Pressure	Up to 6,170 PSI
Flow Rate	From 4 to 1,250gpm
Materials	
Meter Body	316 Stainless steel, (consult factory for other options)
Meter Rotor	17-4PH, Nickel 200, Duplex Stainless steel (consult factory for other options)
Bearings	440C Stainless steel and hybrid ceramic ball bearings, hard carbon composite Additional materials available (consult factory for other options)
Additional Information	
Connection	Between customer specified flanges
Certifications	
	CRN Certified, NIST traceable calibration

Details

1. Magnetic pickup coils included at no extra charge.
2. The WHA Series is linear and accurate over its designed operating range; premium accuracy available, consult factory.

The WHA Series can be complemented with any of our monitors or interface modules to comprise a comprehensive system.



Flow Meter ID (inches)	1"	1 1/2"	2"	3"	4"
Flow Range (gpm)	4-60	8-130	15-225	40-650	75-1,250

Service

Our dedicated staff offers complete support and recertification for flow meters — whether our own or a competitor's brand. Our calibration services are performed by our trained technicians using the latest testing equipment.

Turbines, Inc. maintains extensive inventories in multiple locations to facilitate rapid, industry leading deliveries.

Worldwide Support

We serve customers globally with offices in Altus, OK; Seneca, SC; Odessa, TX; Cranston, RI; and Edmonton, Alberta, Canada.

 All Turbines, Inc. products are proudly made in the U.S.A.



15935 Highway 283 N.
Altus, Oklahoma 73522, USA
Tel: +1-580-477-3067
www.turbinesincorporated.com



112 Lumber Ln.
Seneca, SC 29672 USA
Tel: +1-864-882-4544
www.turbinesincorporated.com



960 South Meadow Ave.
Odessa, TX 79761 USA
Tel: +1-432-333-4800
www.turbinesodessa.com



800 Wellington Avenue
Cranston, RI 02910, USA
Tel: +1-401-461-6366
www.primaryflowsignal.com



2236 80th Avenue NW,
Edmonton, AB T6P 1N2
Tel: 877-661-3569
www.pfscanada.ca